

About ST4TE

The **ST4TE** project aims to provide a comprehensive view of the drivers of the twin transition (TT), the inequalities that emerge or are widened by it, and a set of policies to build greener, more equal and more productive societies.

Why this project?

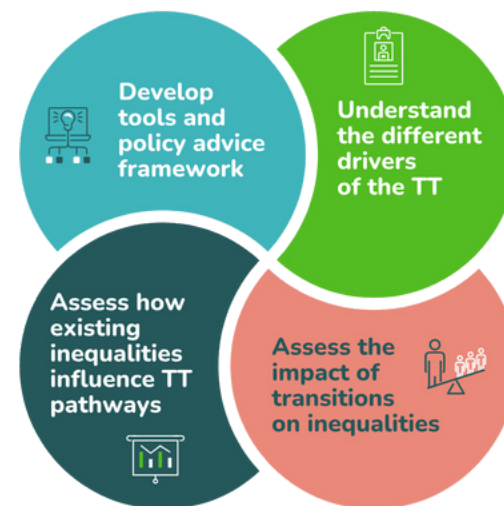
We live in a world of **transitions**, with a shift to **green** forms of production and consumption and to more **digital** ways of working and living. Both processes are expected to generate long-term environmental **benefits** and draw new **opportunities** for economic growth.

A green and digital **divide** is however emerging, not only slowing down overall progress, but also widening the gap between individuals, regions, and social groups, leading to **increased inequality** in both the short and long run.

The twin transition is high up on the European political agenda, yet it remains an **evolving concept**, following parallel roadmaps rather than a cohesive policy framework. Its management is still unclear, and implementation will vary across territories depending on factors such as industrial structure, skills levels, and international connectivity.

Our goals

ST4TE takes a multidimensional approach to examine how the green, digital, and twin transitions shape inequalities. By combining quantitative methods – such as econometrics, machine learning, and agent-based modelling – with qualitative approaches like interviews, case studies, and workshops, the project identifies inequality patterns and explores tailored policy solutions to mitigate their effects.



ST4TE explores how the green and digital transitions impact inequalities across Europe, and how these transitions can be made fairer for all

Key planned outputs from the project include:

-  **Twin Transition Inequalities Index:** A tool to benchmark regional impacts, pinpointing areas in need of targeted support.
-  **White Paper:** Policy recommendations designed to mitigate inequalities and foster inclusive, sustainable growth.
-  **Territorial Impact Report:** Detailed analysis of regional disparities, alongside strategic actions to minimise the gap between advantaged and disadvantaged areas.

Our consortium

The ST4TE project is coordinated by the Aristotle University of Thessaloniki, managed by the European Future Innovation System Centre, and brings together a total of eight partners.



University of Ferrara



Maastricht University



GRAN SASSO SCIENCE INSTITUTE

SCHOOL OF ADVANCED STUDIES
Scuola Universitaria Superiore



Utrecht University



Stay in touch with the project!



www.st4te.eu



[/st4te](https://www.linkedin.com/company/st4te)



[/st4te](https://zenodo.org/communities/st4te)

Strategies for just and equitable transitions in Europe



This project has received funding from the European Union's Horizon Europe under grant agreement No 101132559.